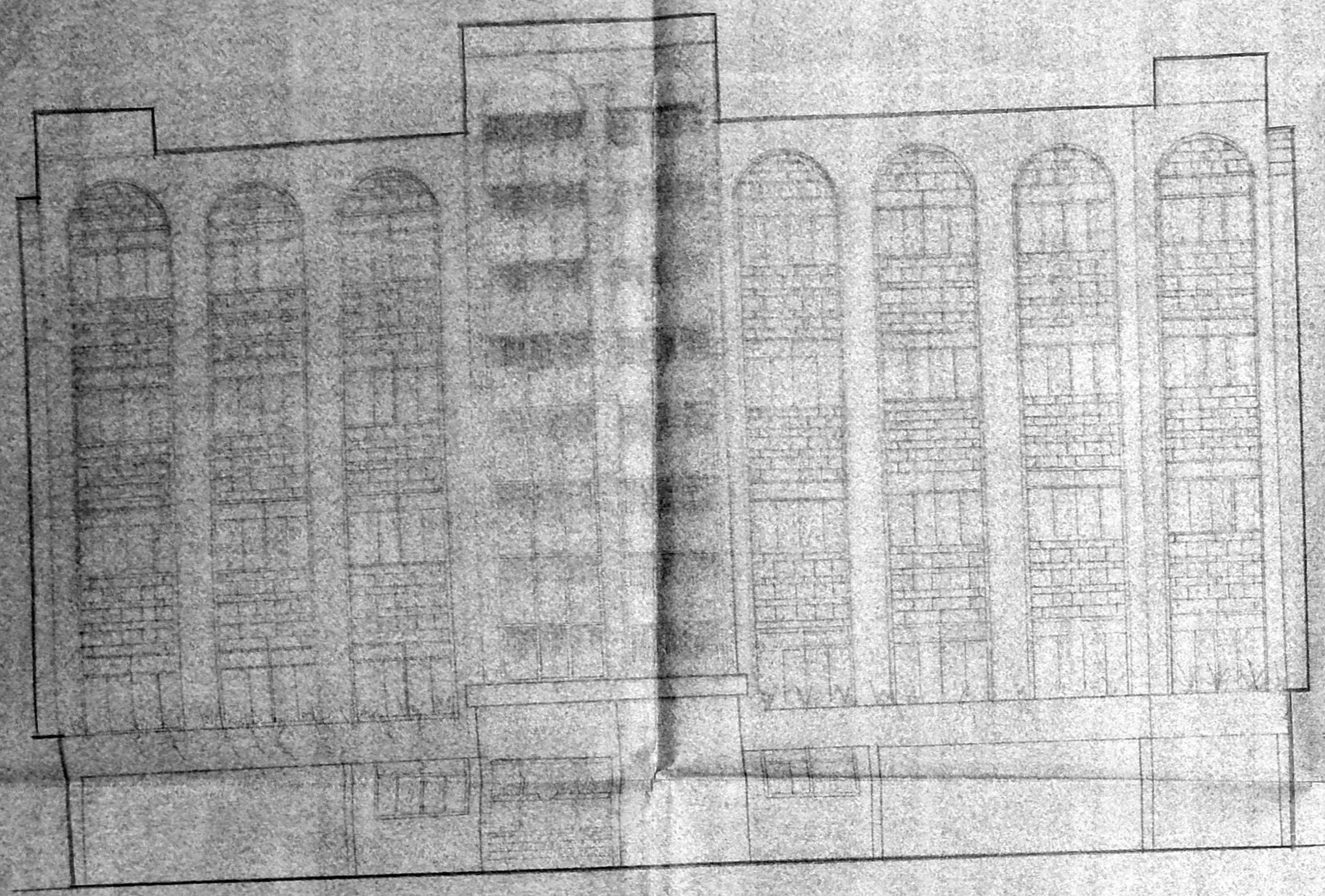


this revises earlier
 CMDA approved
 planning permit no. A/special building/528 A/B/2005
 dated 11/12/2005

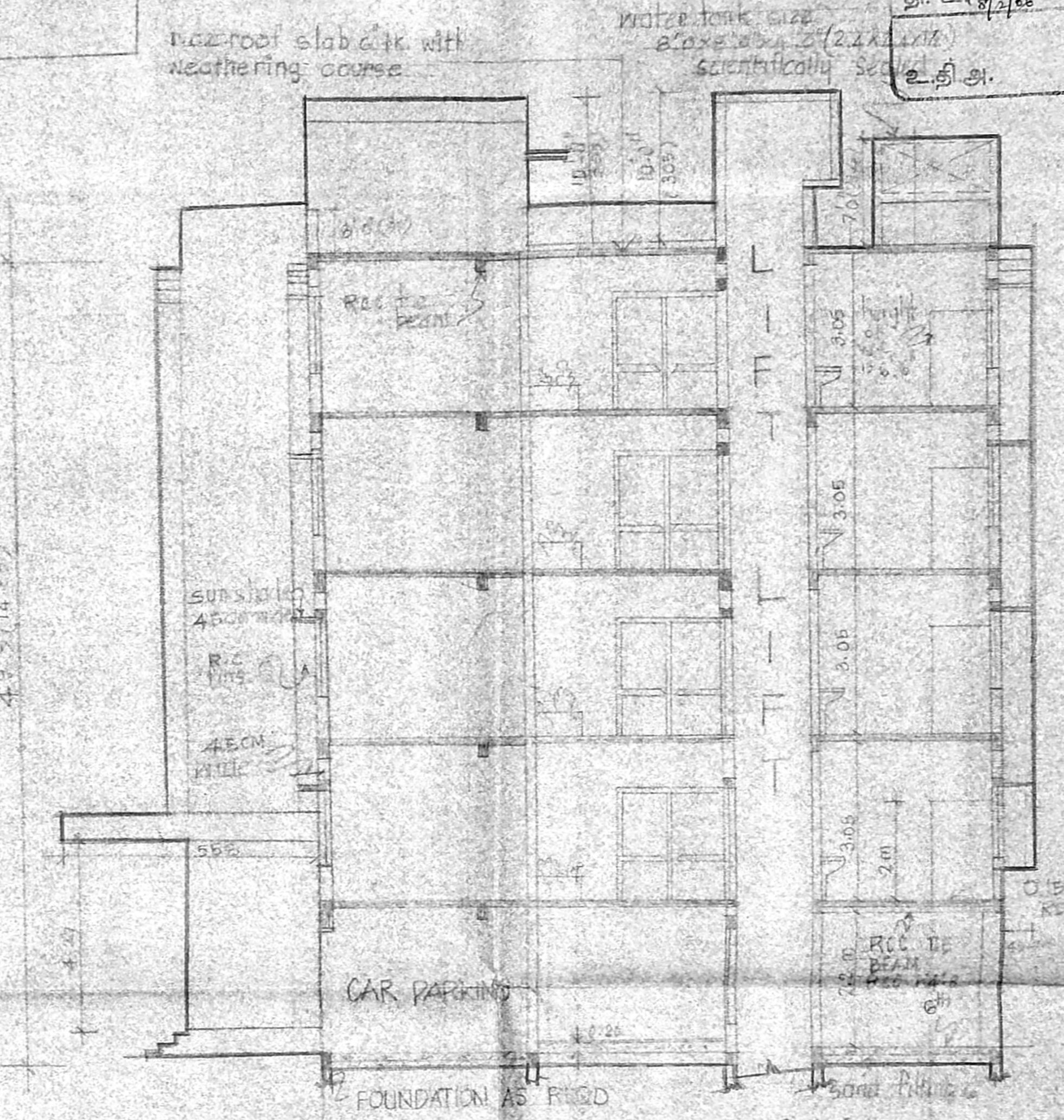
திருத்திய வரைபடம் II
 நாள் 19.1.2006

செ. பெ. வ. கு. (பி) எண்
 ந. எண் RC/5424/05
 உதவி யாளர்
 சம்பந்தம்
 தி. உ. 10/1/06
 உ. தி. அ. கு. தி. அ.

Tamil Nadu State sheet no 1
 clearance board
 அனுமதிப் படி
 90x15 A
 Revised commercial office complex at
 Nondaram in S. No 6143 Pt of t. n. cad of
 village. C.H. P. M. A. I. block 15 143



FRONT ELEVATION



SECTION ON AA

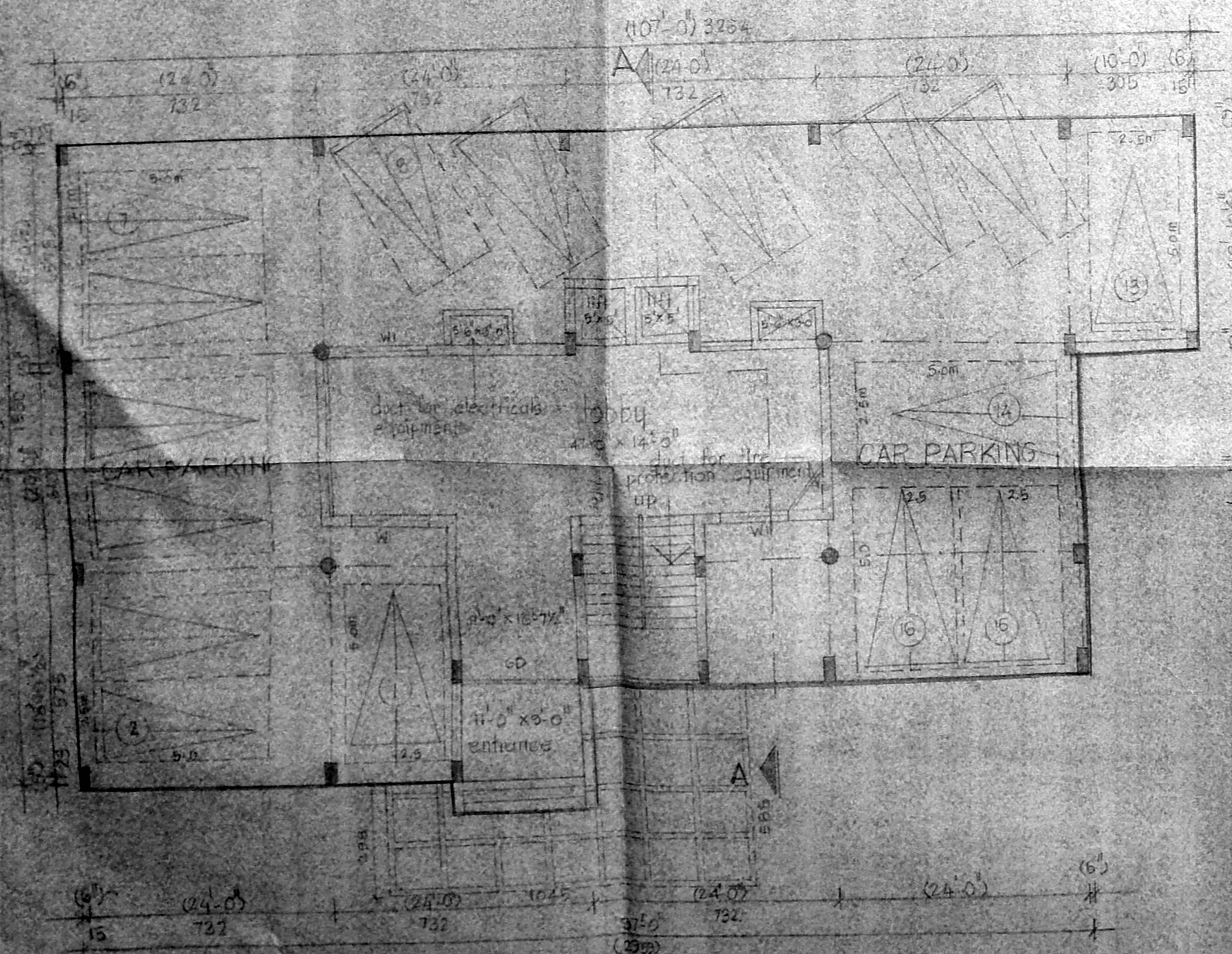
JOURNALIES

60 grill rolling shutter	11.0 x 7.0	(305 x 225)
D. Aluminium main door	8.0 x 7.0	(244 x 221)
D. Teak wood door	4.1 x 7.0	(122 x 221)
W. Aluminium glass and	12.1 x 6.0	(360 x 183)
D. Bison panel door	2.6 x 6.0	(75 x 221)
W. Aluminium glass and	8.0 x 6.0	(244 x 183)
W. DO	6.0 x 6.0	(183 x 183)
W. DO	3.0 x 6.0	(75 x 183)
V. Ventilation	3.0 x 2.0	(9 x 63)

Area details
 extent of land axes 51.7m x 151.5m (on original
 plan) area

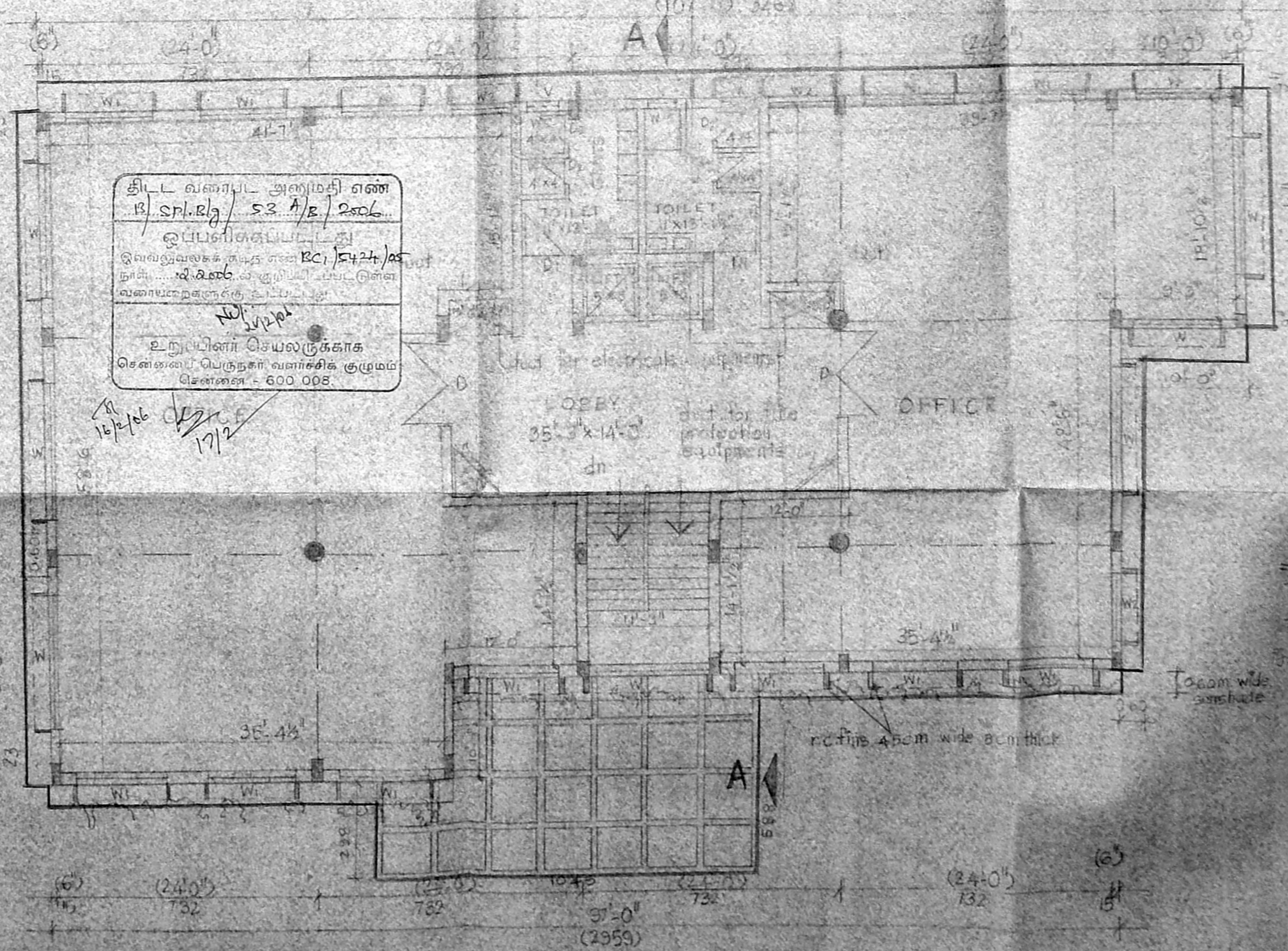
gilt floor	122.97 sqm
1 floor	502.18 sqm
2 floor	502.18 sqm
3 floor	502.18 sqm
4 floor	502.18 sqm
all parties	55.20 sqm
total	2187.75 sqm

park, 1733 sq ft (161 sqm)



still parking floor plan

அனுமதிப் படி



first, second, third & fourth floor plan

floor area details

1st floor	502.18 sqm
2nd floor	502.18 sqm
3rd floor	502.18 sqm
4th floor	502.18 sqm
total floor area	1996.50 sqm

F.S.I. 1.45
 plot coverage: 30.23%

M.A. 20/1/2005
 01/05/2005
 planning dept.

Coyin
 planner

design planner

Y. S. S. S. S.
 engineer

